

## PEDIATRIC



Ambu<sup>®</sup> **SPUR<sup>®</sup> II**  
Single Patient Use Resuscitator

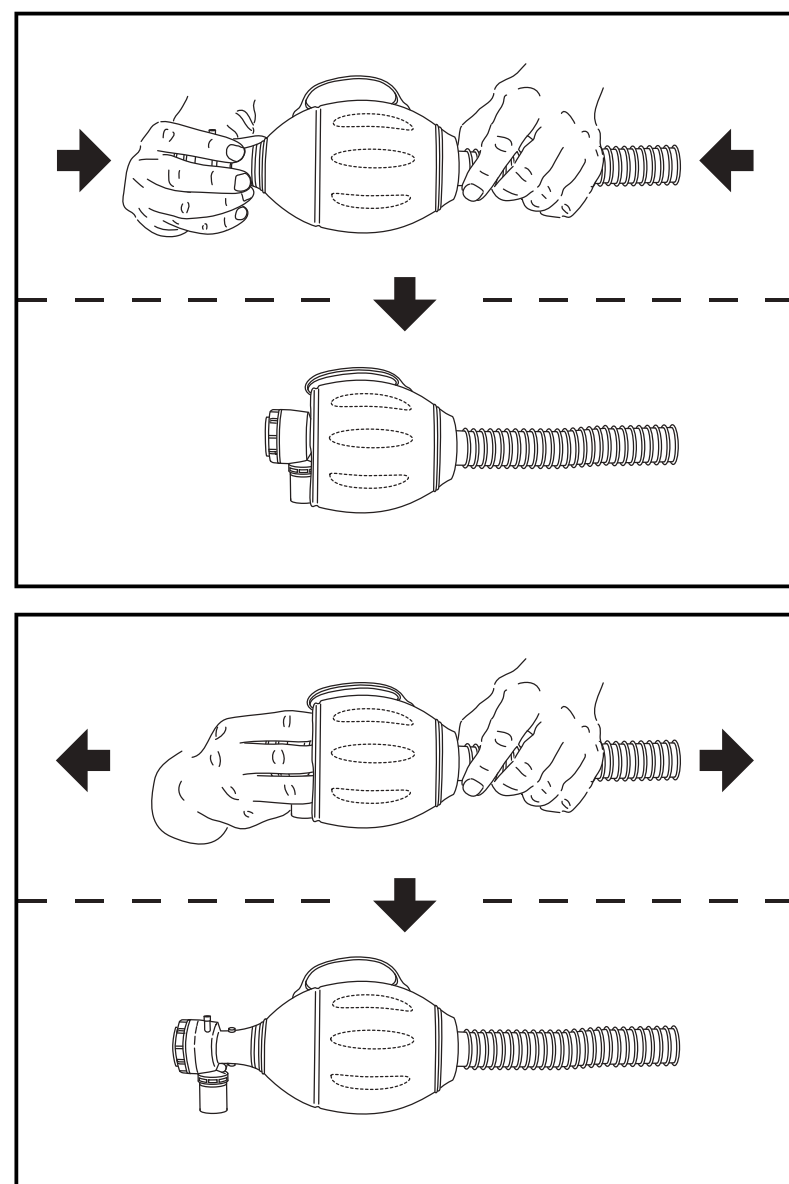
## PRECAUTIONS:

Unpack the resuscitator and do the following before placing it ready for use:

- Unpack the resuscitator from the carrying bag.
- If not expanded already, unfold the resuscitator by pulling the patient valve and the inlet valve.
- Make a functional check as prescribed in the directions for use.
- Pack the resuscitator in the carrying bag (if not done already) with face masks, airway and other ancillary devices prescribed for the intended location of use.
- Make sure that the resuscitator is never stored in a deformed state.
- Users of this product must be informed of the important information in the directions for use.
- Non-sterile.
- Storage temperature: -40°F (-40°C) to +140°F (+60°C).
- Operating temperature: -4°F (-20°C) to +122°F (+50°C).
- The integrity of kits issued for storage ready for use should be inspected at the interval established by your local protocol.

## CAUTION:

U.S. Federal law restricts this device to sale by or on order of a physician.



## WARNING:

- Never store the resuscitator in a compressed state other than folded at the folding zone as shown above.
- Never excessively squeeze the bag during storage. Otherwise permanent deformation of the bag will occur which may reduce the ventilation efficiency.

**Ambu** 

**Manufacturer:**  
 Ambu A/S  
 Baltorpbakken 13  
 DK-2750 Ballerup  
 Denmark  
 Phone +45 72 25 20 00  
 Fax +45 72 25 20 50  
 ambu@ambu.com  
 www.ambu.com

**Subsidiary:**  
 Ambu Inc.  
 6740 Baymeadow Drive  
 Glen Burnie, MD 21060  
 USA  
 Phone (410) 768-6464  
 Customer service 1-800 ambu inc.  
 Fax 1-800 ambu ord